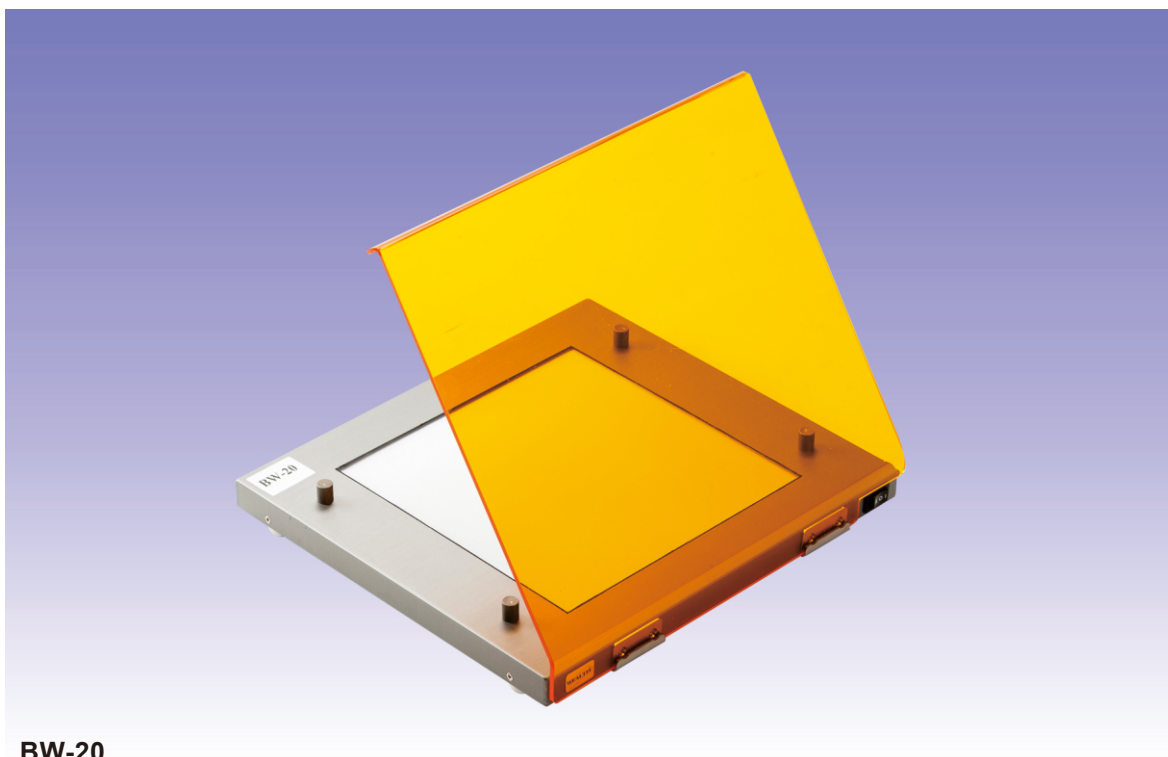


Blue and White Light Transilluminator



BW-20

BW-20 transilluminator equipped with blue and white light dual color selectable LED and light guide filter provides most even trans light emission. Applicable for **Bio-Safe** applications in whole series of imaging systems through built-in power source or external power adaptor.

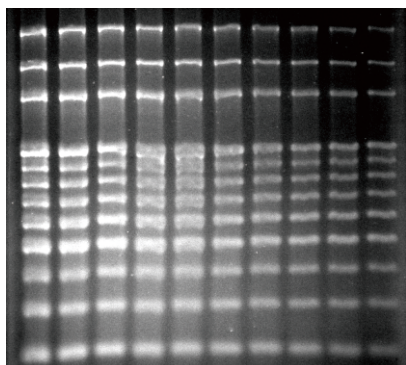
Features

- Compatible for all brand Gel Documentation
- White & Blue light transparent technology
- Compact and high efficiency system
- Superior uniformity at working zone
- Applicable for Bio-Safe application
- High intensity long life LED device
- Small footprint and light weight

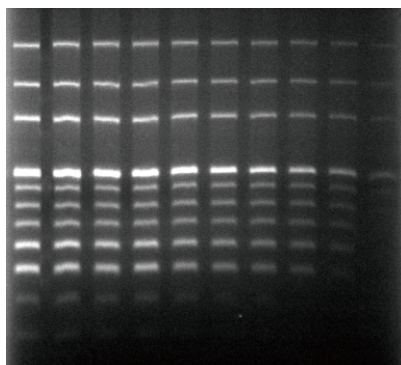
Applications

- Education, university, academic and research institute
- Analytical chemistry, colorimetric laboratory
- Food industrial and inspection laboratory
- Drug discovery, Biotechnology company
- Polymer curing and material testing
- Proteomics, genomics core facility
- Enzyme reaction, immunology

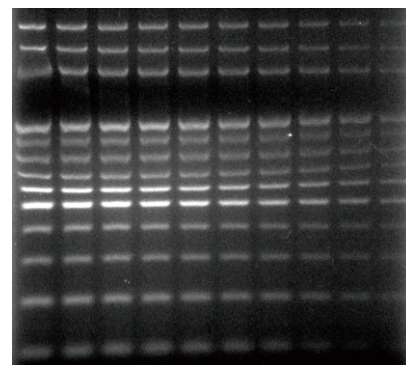
Blue Light Excitation



SYBR Gold stained agarose gel

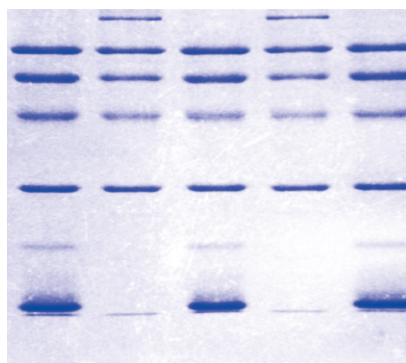


SYBR Green I stained agarose gel

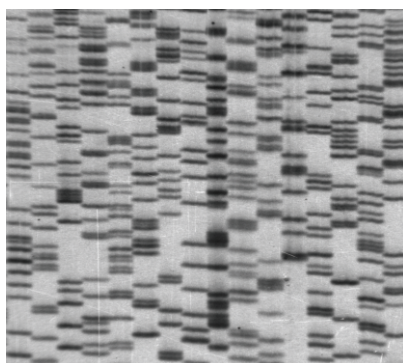


SYBR Safe stained agarose gel

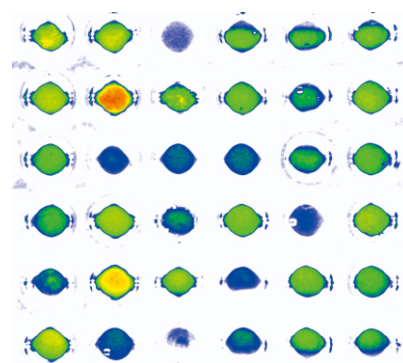
White Light Observation



Coomassie Blue stained SDS-PAGE



X-ray film documentation



Microtiter plate analysis

Specification

Model	BW-20
Filter size (mm)	200 x 200
Filter type	Light guide filter
Wavelength (nm)	Visible / 465 ± 5
Light source	32xWhite LEDs + 32xBlue LEDs
Switch	Blue / White light switchable
Cover frame material	Aluminum
Protection cover	Yes
Power	100 - 240V, 50 - 60Hz
Physical dimensions (mm)	300 x 280 x 40 (W x D x H)
Weight (kg)	1.2
Certification	CE

The spec is subject to change without prior notice.

Ordering Information

Catalog No.	Description
1146021	BW-20 stand alone B&W light transilluminator 20 x 20cm with power adaptor and orange protection cover, 100 - 240V, 50 - 60Hz
1146023	High intensity blue light transilluminator 20 x 20cm with power adaptor and orange protection cover, 100 - 240V, 50 - 60Hz
1146025	High intensity white light transilluminator 20 x 20cm with power adaptor, 100 - 240V, 50 - 60Hz



Wealtec Corp.
1885 Meadowvale Way,
Sparks, NV 89431, USA
Tel: +1-775-351-2066 Fax: +1-775-351-2077

E-Mail: sales@wealtec.com Web-site: <http://www.wealtec.com>

Wealtec Bioscience Co., Ltd.
27F., No.29-1, Sec. 2, Zhongzheng E. Rd., Danshui Dist.,
New Taipei City 251, Taiwan
Tel: +886-2-8809-8587 Fax: +886-2-8809-8589



No. 1208BW01©2014Wealtec Corp.