

1D Software



Dolphin 1D

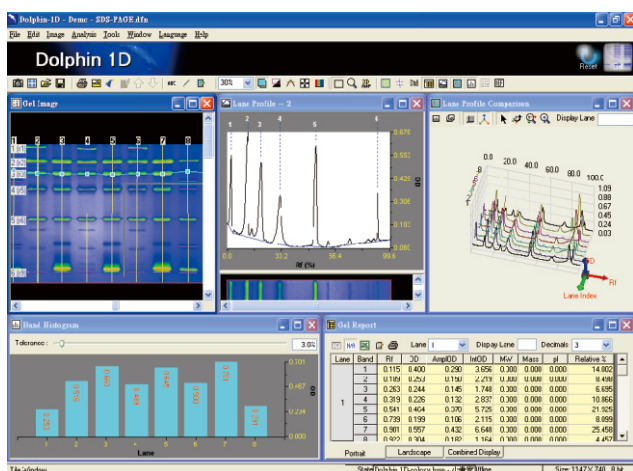
Dolphin 1D software has powerful functions for 1-D gel MW/Mass determination, colony counting, microtiter plate analysis, and spot density calculation, provides operators easy to use advantages in molecular biology laboratory. 1D software is traceable in image enhancement. The main functions include automatic data analysis, lane profile aligns with lane image, Intelligent colony counting, comprehensive microtiter plate analysis, accurate spot density calculation, accurate identification ability of smiling gel, specialized X-axis bands analysis function, and image profile & 3-D display. GLP/GMP version is also available now. Dolphin-1D software can be operated and connected with all Dolphin series imager as well as standalone imager.

Features

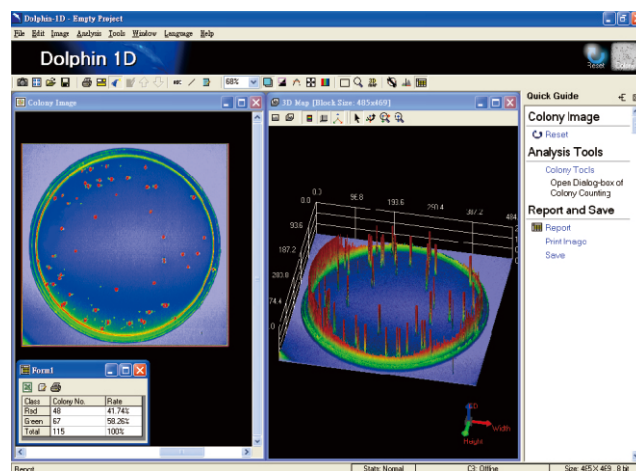
- JPG, BMP, JPEG, DFN, TIFF, PCX, GIF, TGA format compatible
- Specialized X-axis bands analysis function
- Comprehensive microtiter plate analysis
- Automatic data analysis within a second
- Traceable image enhancement function
- Lane profile aligns with lane image
- Identification ability of smiling gel
- Image profile & 3-D display
- Intelligent colony counting
- Spot density calculation

Applications

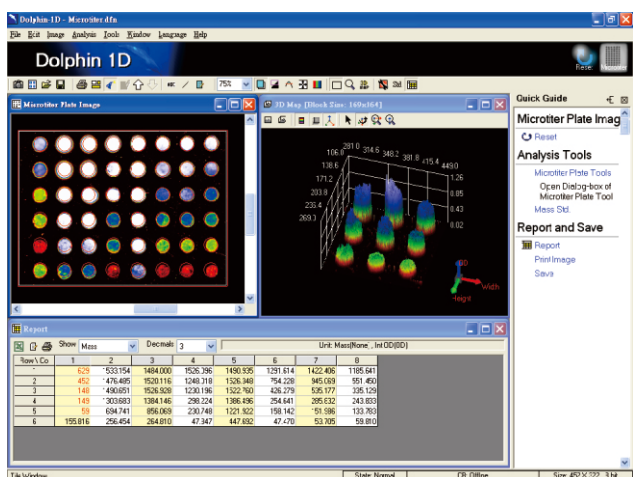
- Education, university, academic and research institute
- Analytical chemistry, molecular laboratory
- Food industrial and inspection laboratory
- Drug discovery, Biotechnology company
- Proteomics, genomics core facility
- Enzyme reaction, immunology



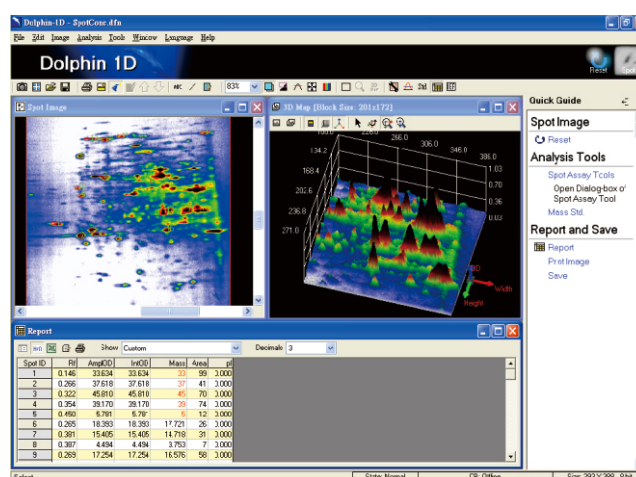
MW/Mass Determination



Colony Counting



Microtiter Plate Imaging



Spot Density Calculation

Ordering Information

Catalog No.	Description
1144001	Dolphin-1D software
1144012	Dolphin-1D software instead of standard Band Tool software



Wealtec Corp.
1885 Meadowvale Way,
Sparks, NV 89431, USA
Tel: +1-775-351-2066 Fax: +1-775-351-2077

E-Mail: sales@wealtec.com Web-site: <http://www.wealtec.com>

Wealtec Bioscience Co., Ltd.
27F., No.29-1, Sec. 2, Zhongzheng E. Rd., Danshui Dist.,
New Taipei City 251, Taiwan
Tel: +886-2-8809-8587 Fax: +886-2-8809-8589



No. 1208D1D01©2014Wealtec Corp.